



Global Maritime Connectivity

The Fleet-Connex is a standalone range of industrial grade, multi band router solutions providing best in class connectivity at speeds of up to 600Mbps over extended ranges global bands from 4G, 3G and 2G standard cellular networks.

It includes enhanced connectivity and security features to ensure peace of mind for our customers. It also comes with support in the form of its Portal that allows for direct management and monitoring of the system.

Systems built to be plug and play with PoE for LAN side connectivity and all prepared prior to shipping.

As standard the Fleet-Connex devices are supplied with integral antennas (2 for the Fleet-Connex, 4 for the Fleet-Connex Pro). As an option they can be supplied with an Antenna Adaptor Plate allowing the antennas to be mounted separately, for example higher up the mast to provide enhanced range connectivity.



NodeConnect Family of devices

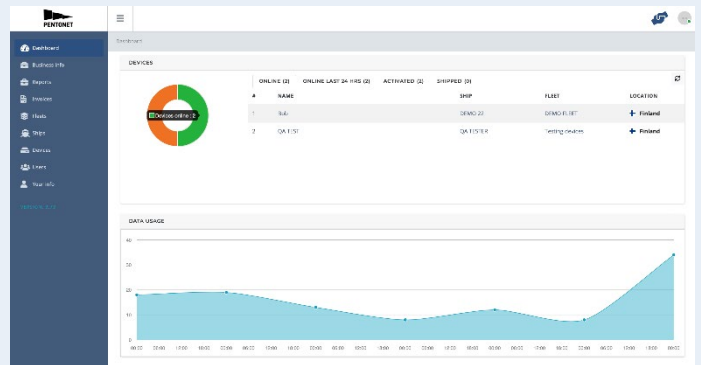
Device Family

- Fleet-Connex
- Fleet-Connex Pro

The Fleet Connex is supplied as standard to connect directly to the ship's network. As an option it can be supplied with an IDU that bonds the ethernet connections increasing the data throughputs. The Fleet-Connex Pro is supplied with the IDU as standard, bonding up to 6 ethernet connections. The Fleet Connex Pro can also be supplied with an optional GPS Location service.

Management Portal & Firmware

- **End to End management.** Firmware all developed in-house for complete control and management of systems.
- **Pentonet Portal** to control the Fleet-Connex service through remote updates, whitelist/blacklist configuration and usage caps
- **Email** notifications and status warnings for usage
- **BYOSIM.** Use third party SIM in Fleet-Connex Pro whilst still enjoying same management benefits



Dimensions - 388x176x99 mm

Weight - 2.5 Kg (approx.)

Supported Bands

- **4G (LTE-FDD):** B1 (2100 MHz), B2 (1900 MHz), B3 (1800 MHz), B4 (1700 MHz), B5 (850 MHz), B7 (2600 MHz), B8 (900 MHz), B12 (700 MHz), B13 (1800 MHz), B18 (850 MHz), B19 (800 MHz), B20 (800 MHz), B25 (1900 MHz), B26 (850 MHz), B28 (700 MHz)
- **4G (LTE-TDD):** B38 (2600 MHz), B39 (1900 MHz), B40 (2300 MHz), B41 (2500 MHz)
- **3G:** B1 (2100 MHz), B2 (1900 MHz), B4 (1700 MHz), B5 (850 MHz), B6 (800 MHz), B8 (900 MHz), B19 (800 MHz)

Key Features

- **Throughput:** Up to 600Mbps download and 50Mbps upload (where supported by network)
- **IP67 rated:** Protected against water ingress even if immersed in up to 1M depth!
- **Operating Temperature:** Wide range for all regions -40 °C to 75 °C
- **Power over Ethernet:** Simple and safe deployment
- **Operational Range:** Up to 50NM or more offshore

Antennas

- **Type:** End fed Dipole omnidirectional - cross polarisation
- **IP66 rated:** Industry standard protection against water jet pressure
- **N-Type Connector:** Common industry standard connection for simple installation
- **Operating Temperature:** Wide range for all regions -55 °C to 70 °C
- **Survival Wind Speed:** 55 m/s (125 mph)
- **Gain:** up to 23dBi gain depending on model