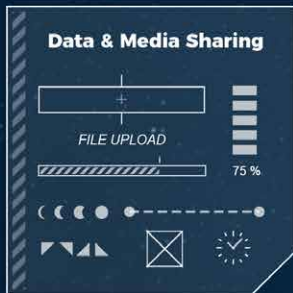


SKYLINK

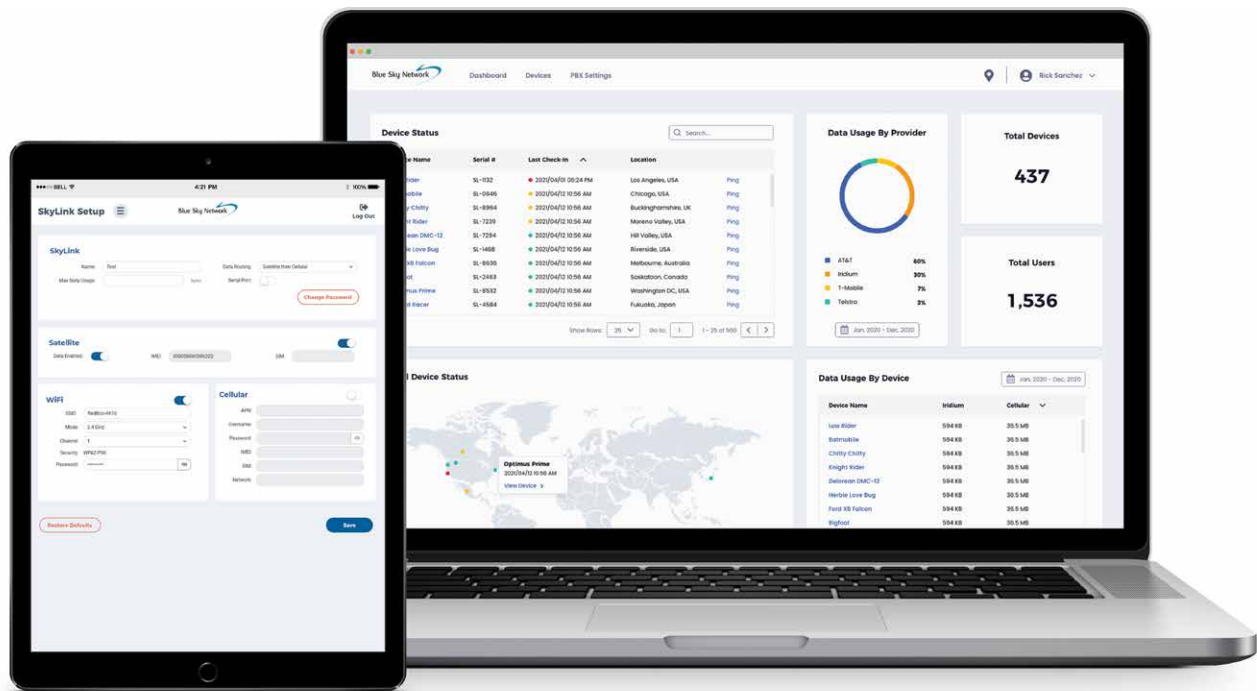


CLOUD SERVICES

A performance-driven device and user management platform for remote, mobile, and global operations.



www.blueskynetwork.com



TAKE MISSION CONTROL TO THE NEXT LEVEL

SkyLink Cloud Services by Blue Sky Network is a performance-driven, cloud-based analytics platform for remote, mobile, and global operations. This system leverages Iridium's award-winning satellite technology and Global Line of SightSM coverage, plus local GSM/LTE networks to create a powerful, dual-mode managed network solution unlike any other.

Designed for you as Infrastructure as a Service, the SkyLink Cloud Services solution is specifically engineered to capture and disseminate mission-critical information and display it in a secure online portal. Using RS232, connect legacy sensors to the cloud for complete visibility of your assets. Customizable reports, activity alerts, and dashboards work around the clock, making sure important details are recorded in real-time, anytime, and anywhere in the world.

Key Verticals



VEHICLES

Dual-mode technology keeps drivers connected and assets online, even when moving in and out of remote areas.



AIRCRAFT

Iridium's Global Line of SightSM enables reliable connectivity for autonomous communications and data monitoring beyond visual line of sight (BVLOS).



IOT/M2M

Gather and share sensor data between mission-critical assets for non-stop data monitoring, regardless of location or conditions.



VESSELS

Deploy location-based reports for quota management, theft prevention, and regulatory requirements using the LEO Iridium Certus[®] network.



REMOTE SITES & BUILDINGS

Send messages, metrics, and media files to and from remote or off-line locations for continuous coverage, efficiency, and business continuity.



PERSONNEL

Check in with remote personnel and enable data-driven ground operations with two-way messaging and portable hardware options.

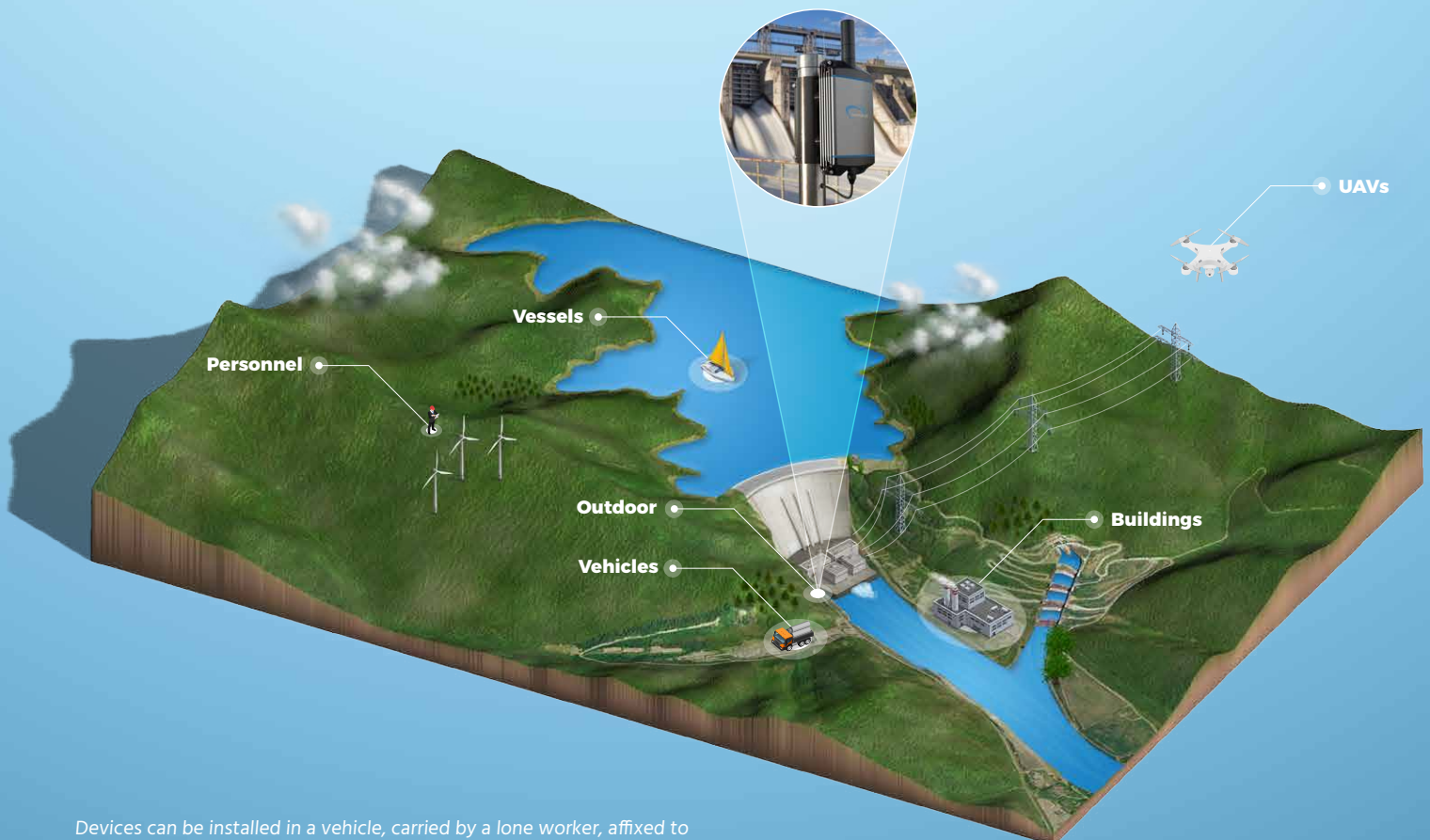
Achieve Mission Versatility with Custom Configurations

The SkyLink Data Gateway and Communications Companion work seamlessly with SkyLink Cloud Services, offering reliable connectivity for end-to-end sensor reporting and optimized asset utilization. This small-form, multi-stack hardware is designed for any fixed-mount, mobile, and aviation application, and offers a range of service configurations for mission-focused safety, reliability, versatility, and affordability. An optional rechargeable backup battery offers up to 6 hours of continuous power for off-grid sites, power outages, or remote operations.

As a certified Iridium Connected® solution, SkyLink is ideal for use in areas where satellite service is required, cellular connection is spotty, or assets are moving in and out of cellular range.

USE CASES

- › Telemetry
- › Command and Control for BVLOS
- › Internet/VPN
- › Email
- › Media sharing
- › Asset utilization
- › Graphical weather
- › Tide/current reporting
- › Anti-piracy



Devices can be installed in a vehicle, carried by a lone worker, affixed to an outdoor mast, or mounted inside a building, vessel, or aircraft. Required antennas and mounting accessories vary per use.



Dual-mode Data Gateway shown with optional Communications Companion (left) and LTE extender antenna.

ANTENNA OPTIONS



Fixed-mount antenna



Vehicle antenna



Aviation antenna



INTERFACES

- A.** 100/1000 Ethernet
- B.** USB with voice capability
- C.** RS232 for external inputs and outputs
- D.** Wide range power (10-34VDC) with ignition sense
- E.** Ethernet with POE
- F.** RS232 for legacy terminals and USB with voice capability

Device Specifications

PHYSICAL*

- › Size (Data Gateway): 5 x 8.5 x 1.35 in (123 x 215 x 34 mm)
- › Size (Communications Companion, optional): 5 x 8.5 x 1.35 in (123 x 215 x 34 mm)
- › Weight (per unit): 1.5 lbs (0.68 kg)
- › Power source: vehicle ignition, Power over Ethernet, AC/DC adapter
- › Input power: 10-34VDC
- › Output power: 18W peak power, 7W nominal
- › Operational temperature: -40°C - +70°C
- › Long-life backup battery (optional)
- › IP65 compliant for outdoor installation
- › Mounting options: vertical, horizontal, remote antenna

** Physical product specifications subject to change*

CONNECTIVITY

- › Iridium Certus 100 services - 88 kbps DL/22 kbps UL
- › Cellular LTE, 3G, 4G
- › Least-cost routing
- › GNSS positioning
- › Wi-Fi
- › Bluetooth
- › Local firewall
- › 2x Iridium voice lines
- › PTT (app-based)
- › Hosted applications
- › Configuration, status, and usage monitoring



THE IRIDIUM CERTUS® ADVANTAGE

Blue Sky Network's SkyLink solution is powered by the Iridium® network, which enables enterprise-grade voice, remote monitoring, and data management. Paired with its Global Line of SightSM service, Iridium enables reliable coverage for unmanned vehicle systems anywhere in the world. Additionally, within the SkyLink hardware, the Iridium Certus™ 9770 module serves as an embedded technology for continuous pole-to-pole coverage. The Iridium Certus™ 9770 provides low-latency and weather resilient connectivity using Iridium's truly global Low-Earth Orbit (LEO) architecture of 66 cross-linked satellites.

ABOUT BLUE SKY NETWORK

Blue Sky Network offers innovative satellite solutions for worldwide voice, data, and fleet operations. Its pioneering platform, SkyRouter™, is an exclusive, customizable cloud-based portal for real-time fleet monitoring and performance management. With Blue Sky Network's SkyRouter and SkyLink Cloud Services, locate, track, monitor, and communicate with any asset, anytime, and anywhere on the planet.

Blue Sky Network is an Iridium Certus service provider and value-added manufacturing partner.

TO LEARN MORE:

[Click here](#) or scan the code to the right to learn more about SkyLink Cloud Services on our website.



**ANY OPERATION
ANY ASSET
ANYWHERE**



www.blueskynetwork.com

San Diego, CA: +1 858-551-3894

Scottsdale, AZ: +1 480-443-1424

sales@blueskynetwork.com